



# CEPTORN PORTABLE CRANE

RK11-311 MKII

**CEPTORN | CRANES**



## INTRODUCTION

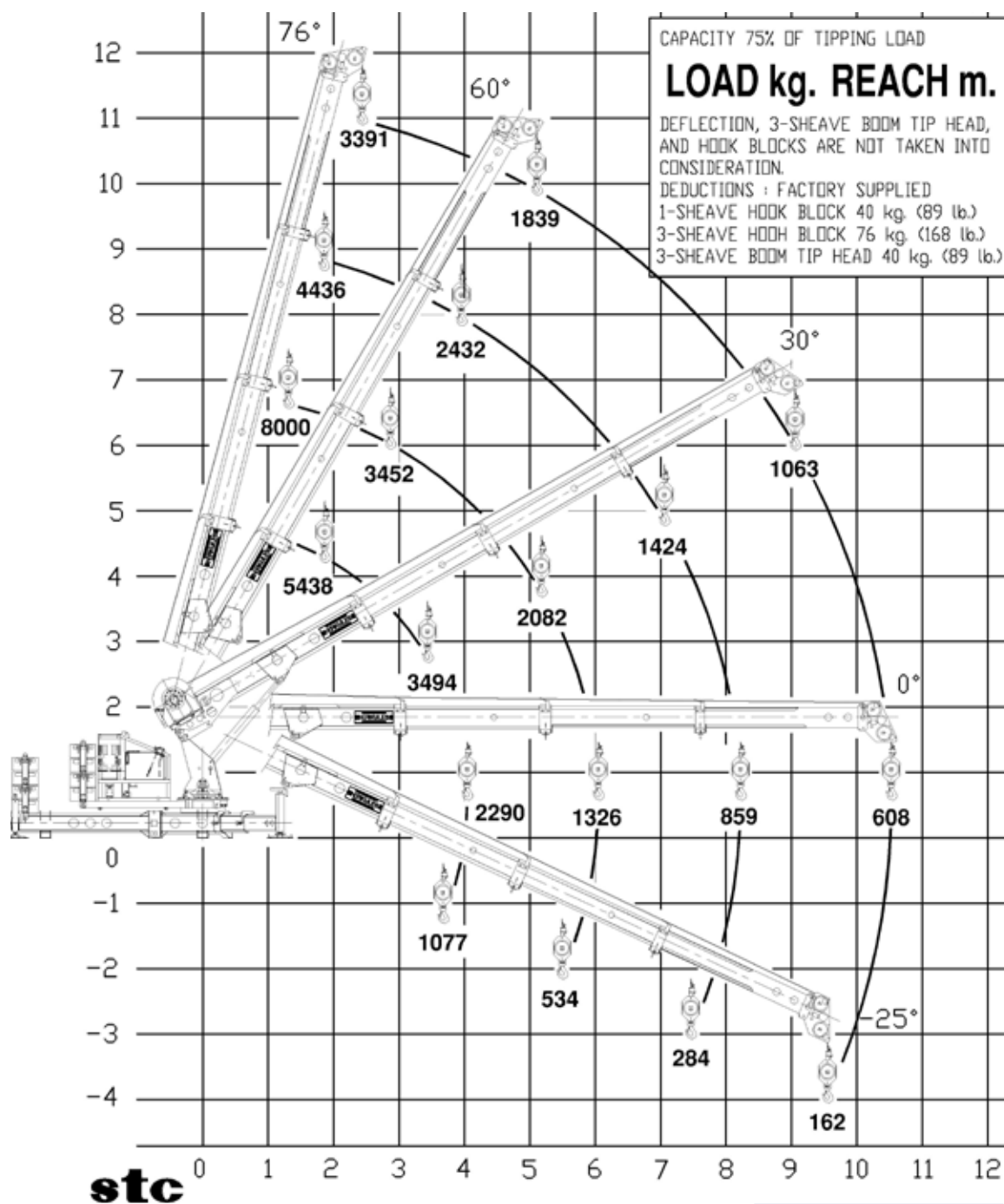
The Ceptorn crane is a electric hydraulically powered, portable crane with a 4-section, 3-step telescopic boom. Easy to assemble and dismantle by means of quick hitch for all major parts and quick couplings for the hydraulic plumbing.

The crane incorporates a wealth of sophisticated features which combined makes the Ceptorn crane the strongest, lightest, safest, far-reaching and versatile portable material handling crane on the market today. Special attention has been given to make the Ceptorn crane virtually maintenance free. This, combined with utilising only the finest equipment, together with an extremely tough quality control, provides for many years of trouble free operation. The ingenious design of the Ceptorn crane allows handling of loads in places, and under conditions where ordinary cranes normally have to give up!!

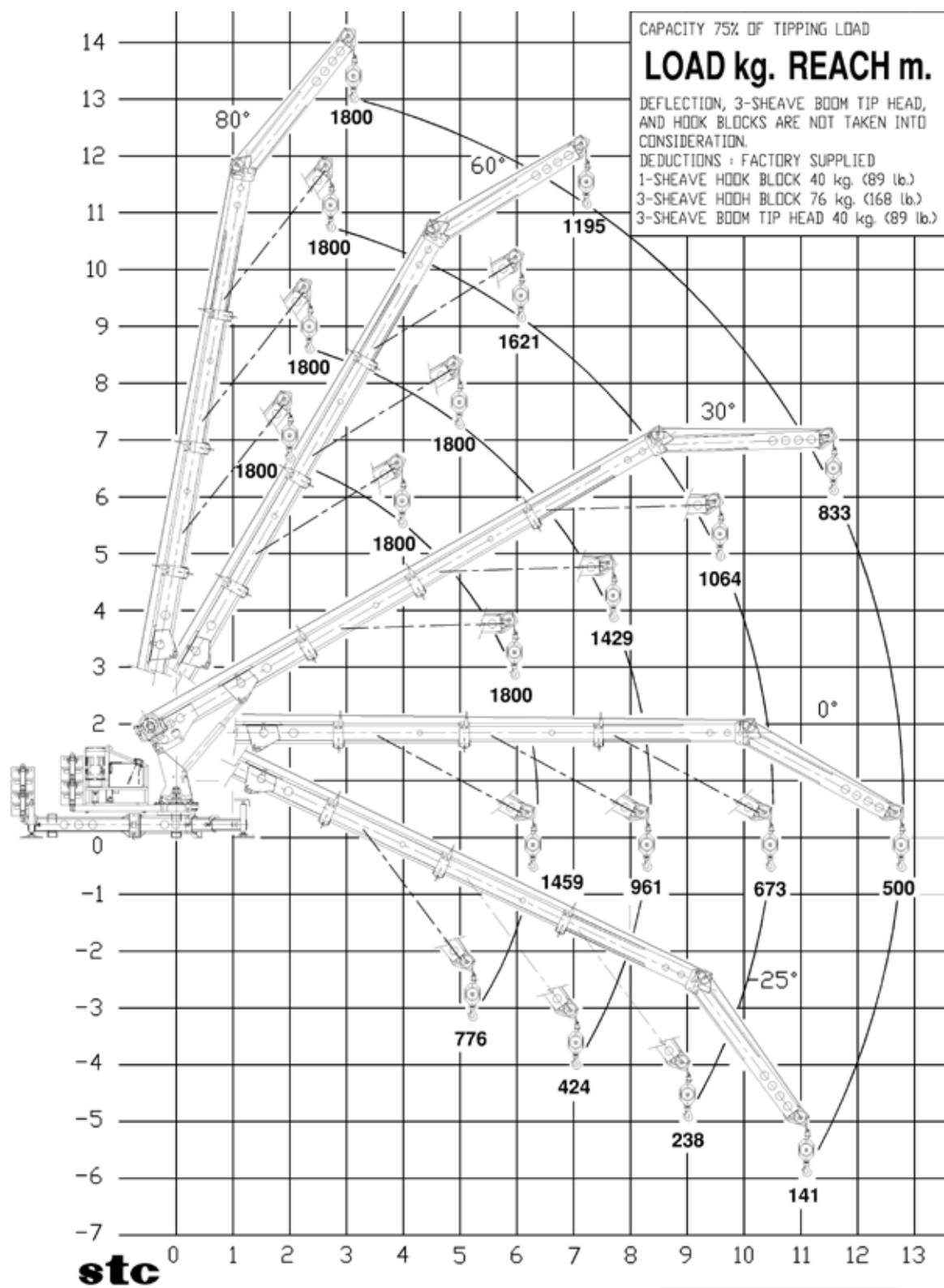
## TECHNICAL DATA

DESCRIPTION	EUROPE	USA/CANADA
Lifting torque	112.4 kNm (11.5 tm)	82902 lbf ft
Hydraulic outreach	10.3 m	33.80 ft
Hydraulic boom extension	6,635m/23 sec	21.80 ft/sec
Slew rotation	630°/63 sec	630°/63 sec
Slew speed	10°/sec	10°/sec
Boom elevation range	-25°-+80°	-25°-+80°
Boom elevation speed	Up 22 sec down 14 sec	Up 22 sec down 14 sec
Max hook height under slew	10.7 m	35.10 ft
Max hook height 1-part line	225 m	738 ft
Pump flow	66 l/min	17.5 gal/min
Max working pressure	330 bar	4620 psi
Power supply	3-phase 380V 50Hz	3-phase 230V 60Hz
Control valve	Proportional direct controlled	Proportional direct controlled
Hydraulic tank capacity	160 l	42 gal
Winch max single line pull	1800 kg	3970 lb
Winch max single line speed		
• Hoisting	55 m/min	180 ft/min
• Lowering	157 m/min	515 ft/min
Winch std storage capacity	235 m	771 ft
(consult factory for alt. Capacity)		
Wire rope	Rotation resistant ø 11mm	Rotation resistant ø 11mm
Outrigger width/ extended	3880 mm	12.72 ft
Total crane weight	6200 kg	13670 lb

## RK11-311 MKII - LOADCHART - METRIC

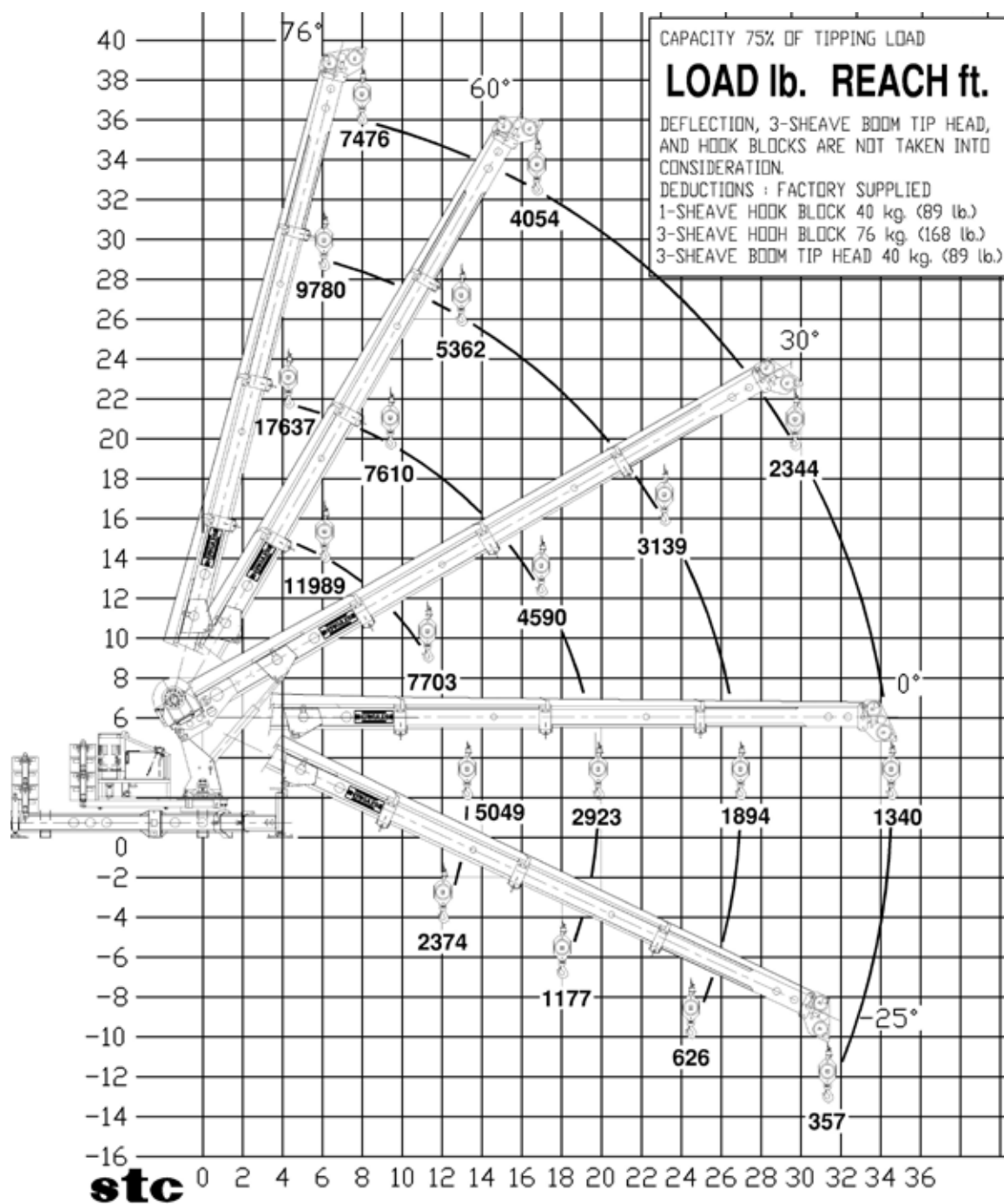


## RK11-311 MKII - LOADCHART - METRIC - WITH FLYJIB

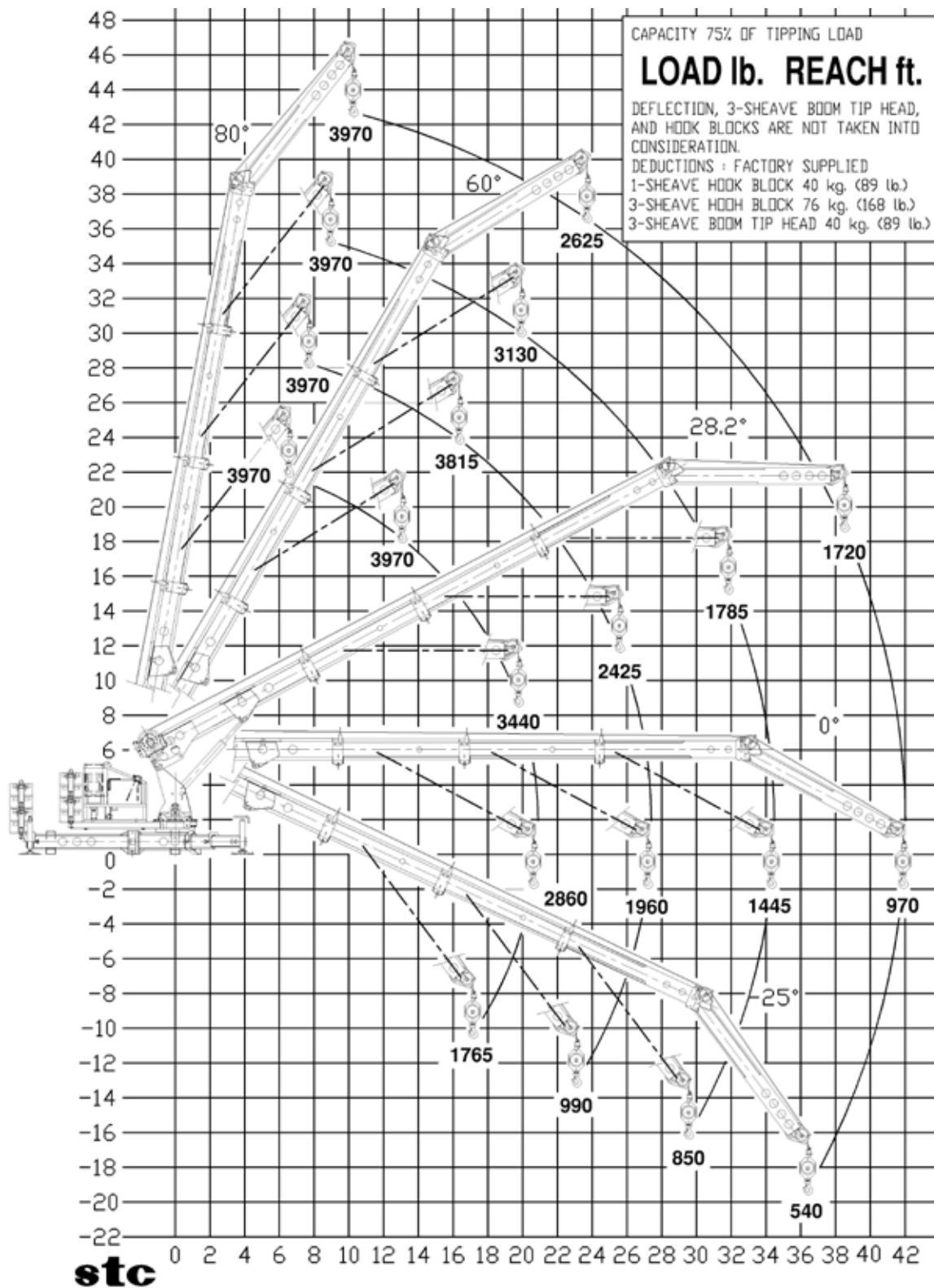




## RK11-311 MKII - LOADCHART - IMPERIAL



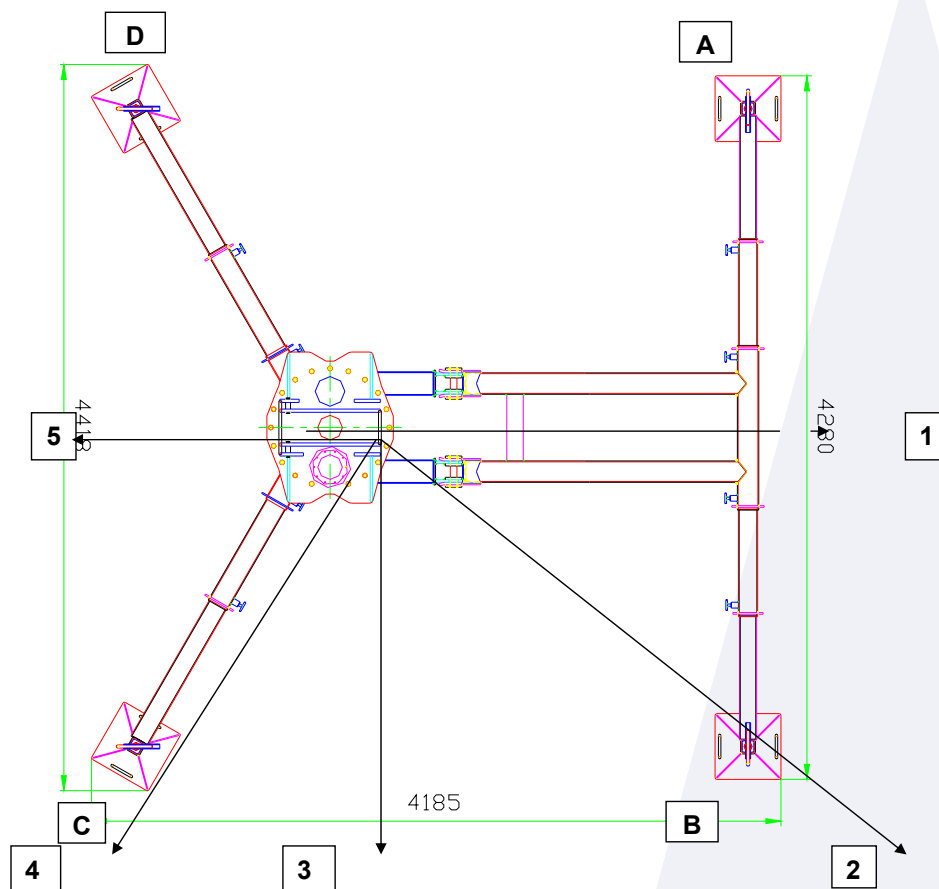
## RK11-311 MKII - LOADCHART - IMPERIAL - WITH FLYJIB



# RK11-311 MKII/CORNER PRESSURE (METRIC)

Load = 1.049 kg

Radius = 9.034 m



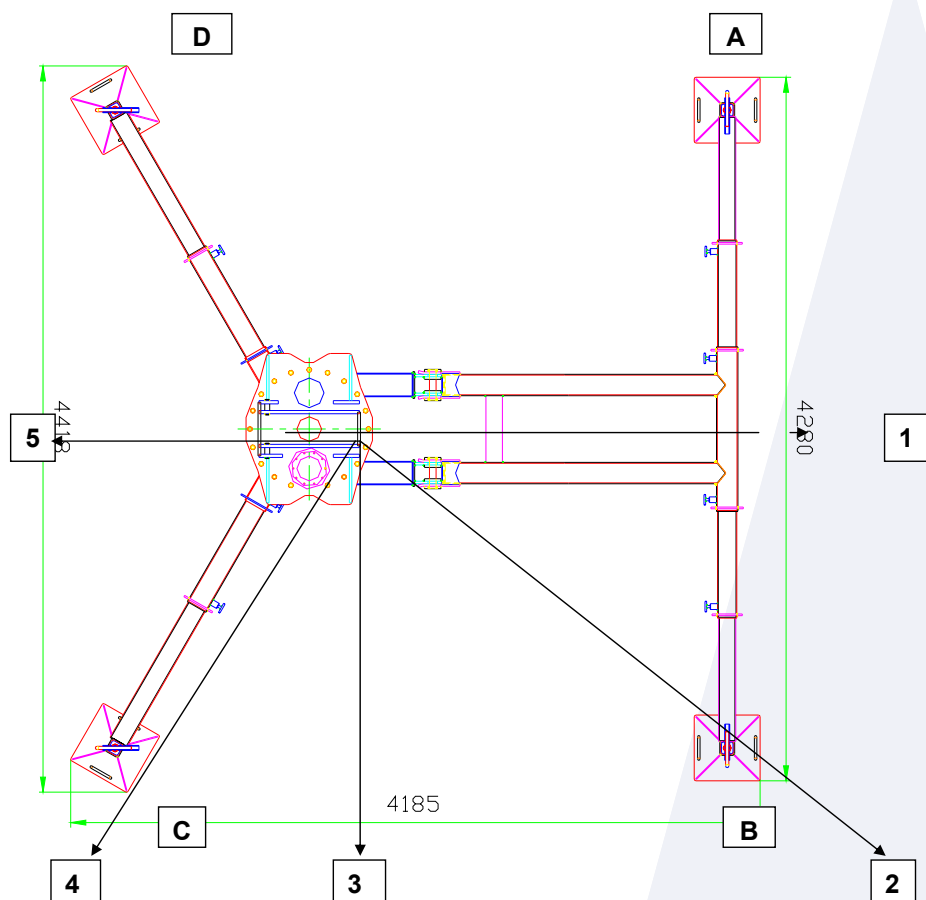
JIB POSITION \ CORNER	CORNER			
	A	B	C	D
1	33.02 Kn	33.02 kN	-	-
2	12.66 Kn	30.34 kN	13.41 kN	-
3	-	21.11 kN	45.40 kN	-
4	-	18.33 kN	29.02 kN	10.66 kN
5	-	-	34.43 kN	34.43 kN



# RK11-311 MKII/CORNER PRESSURE (METRIC)

Load = 7.849 kg

Radius = 1.928 m

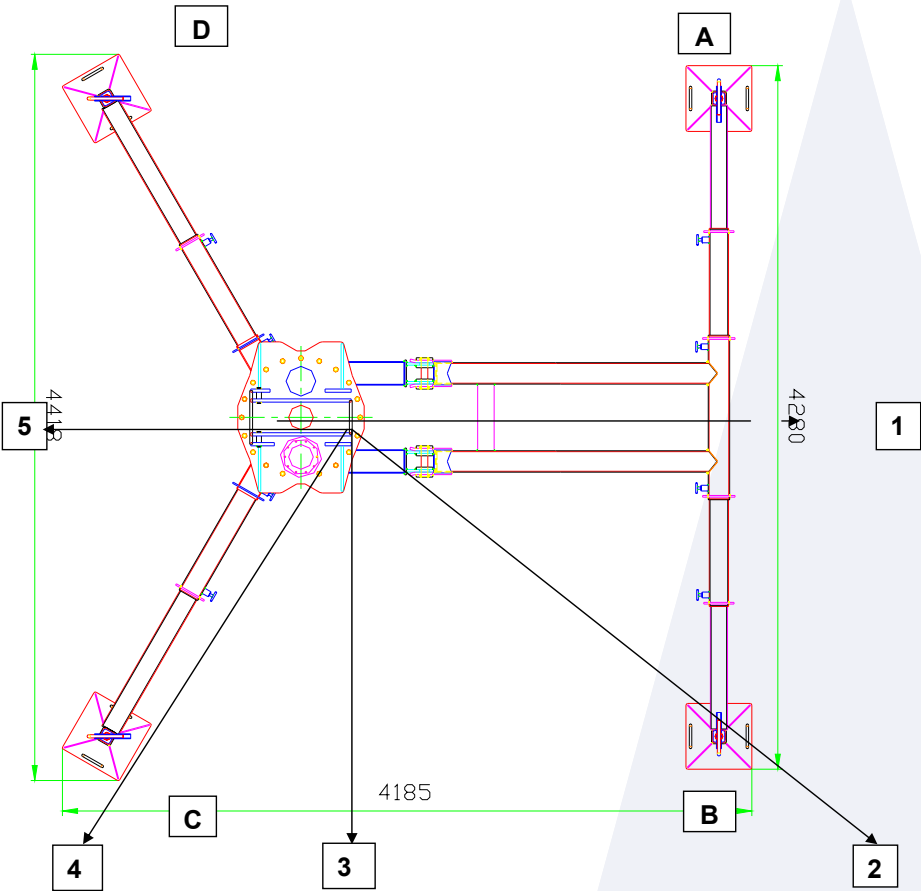


CORNER JIB POSITION	CORNER			
	A	B	C	D
1	54.07 Kn	54.07 Kn	-	-
2	22.85 Kn	54.74 kN	24.18 kN	-
3	-	39.52 kN	84.97 kN	-
4	-	37.50 kN	59.37 kN	21.80 kN
5	-	-	71.93 kN	71.93 kN

RK11-311 MKII/CORNER PRESSURE (IMPERIAL)

Load = 2312 lbs

Radius = 29.63 ft

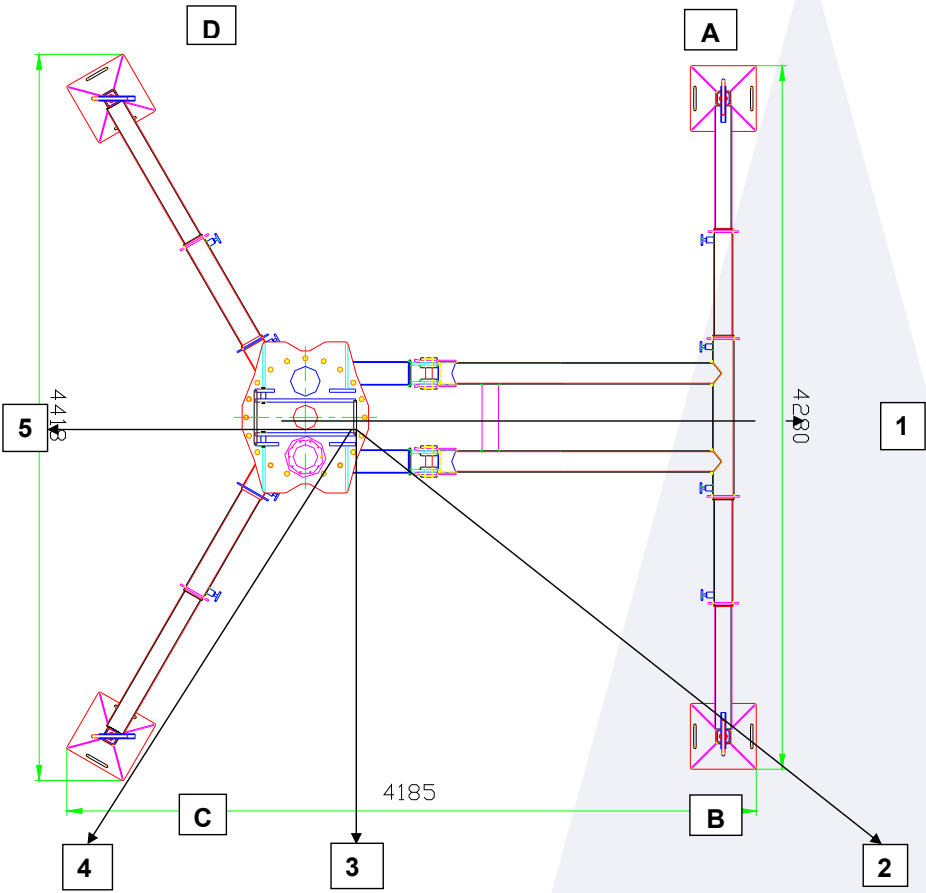


JIB POSITION \ CORNER	CORNER			
	A	B	C	D
1	7427 lbs	7427 lbs	-	-
2	2848 lbs	6824 lbs	3016 lbs	-
3	-	4748 lbs	10211 lbs	-
4	-	4123 lbs	6527 lbs	2398 lbs
5	-	-	7744 lbs	7744 lbs

RK11-311 MKII/CORNER PRESSURE (IMPERIAL)

Load = 17303 lbs

Radius = 6.32 ft



CORNER JIB POSITION	CORNER			
	A	B	C	D
1	12161 lbs	12161 lbs	-	-
2	5140 lbs	12312 lbs	5439 lbs	-
3	-	8889 lbs	19111 lbs	-
4	-	8435 lbs	13353 lbs	4904 lbs
5	-	-	16178 lbs	16178 lbs

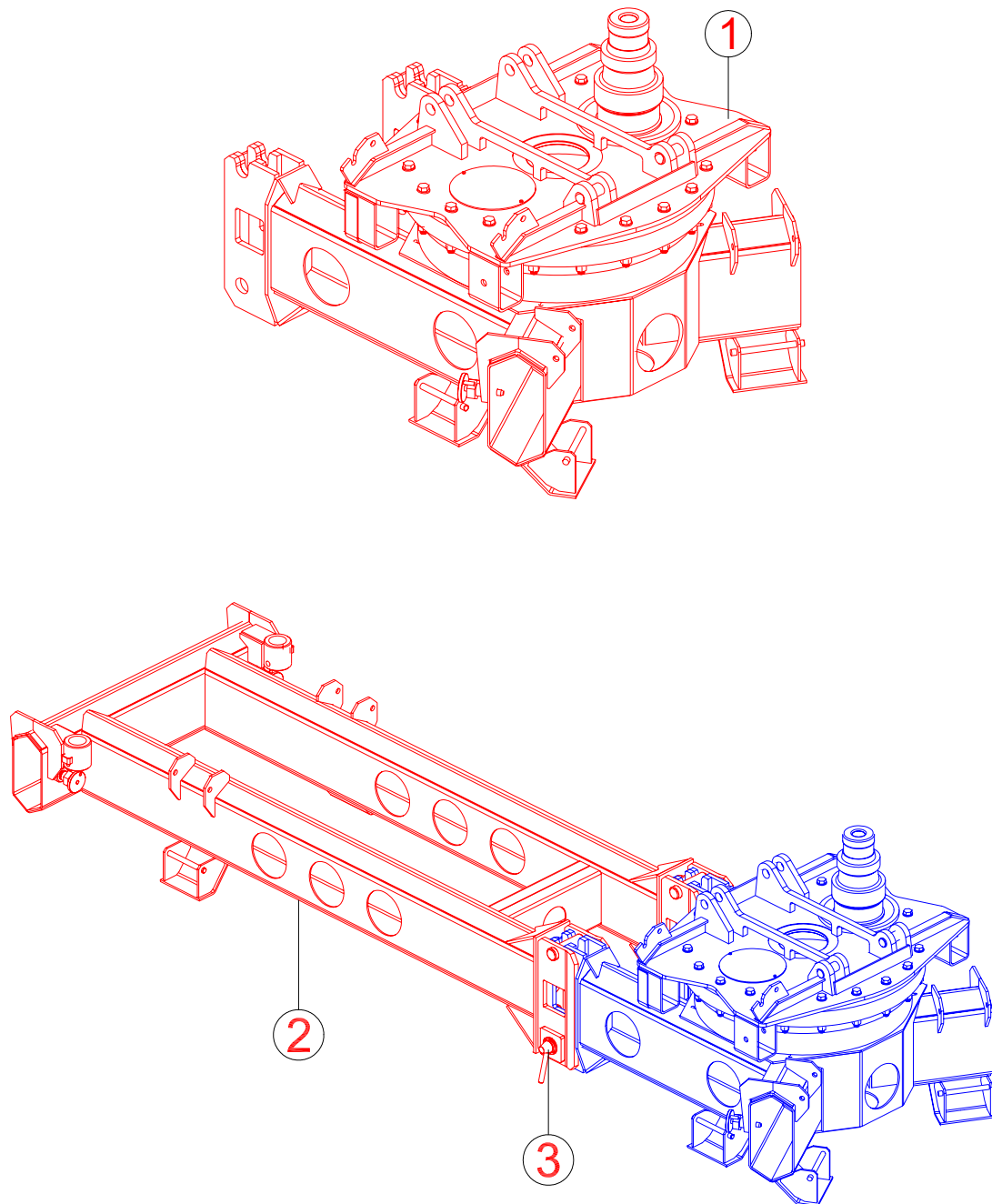
## WEIGHT OF COMPONENTS WHEN RK11-311 MKII IS DISASSEMBLED

COMPONENT	WEIGHT KG KG	WEIGHT Lb Lb	COMPONENT	WEIGHT KG	WEIGHT Lb
Rear base	290	638	Boom cylinder w.Yoke	92	202
Slew base	492	1083	Main boom w.Tele cyl.	327	720
Inner outrigger, rear	35	77	1st telescope section	107	236
Outer outrigger, rear	31	69	2nd telescope section	105	232
Inner outrigger, front	43	95	3rd telescope section	79	174
Outer outrigger, front	41	91	Boom tip head 1-sheave	20	44
Outrigger foot plate	13	29	Boom tip head 3-sheave	60	133
Counter frame	85	188	Hook block 1-sheave	40	89
Column w.Yoke	140	309	Hook block 3-sheave	76	168
Power pack w. Oil	562	1237	Winch w. 250 m rope	300	661
Counter weight stand	28	62	Wheel	56	124
Counterweight	12	27	Fly jib	83	183
Operator platform	36	80	Erection crane (lower)	56	124
Platform hand rail	15	34	Erection crane (upper)	42	93
Platform gate	9	20			



## ILLUSTRATED ASSEMBLY OF RK11-311 MKII BY 3D DRAWINGS

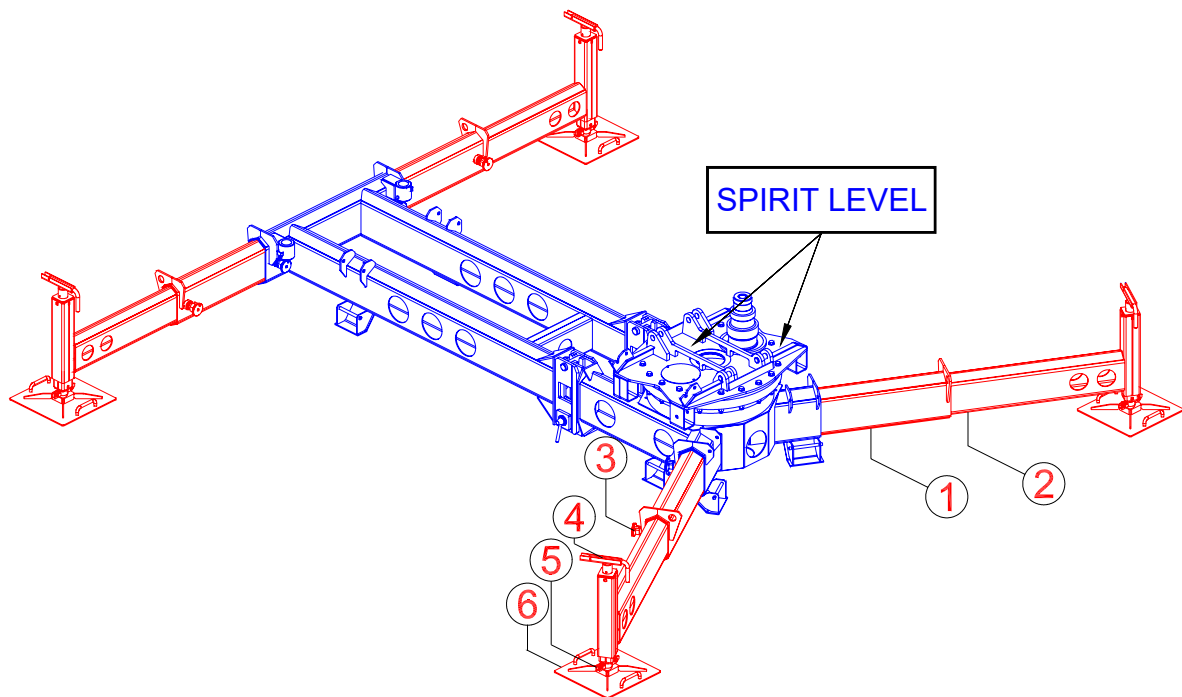
Step 1



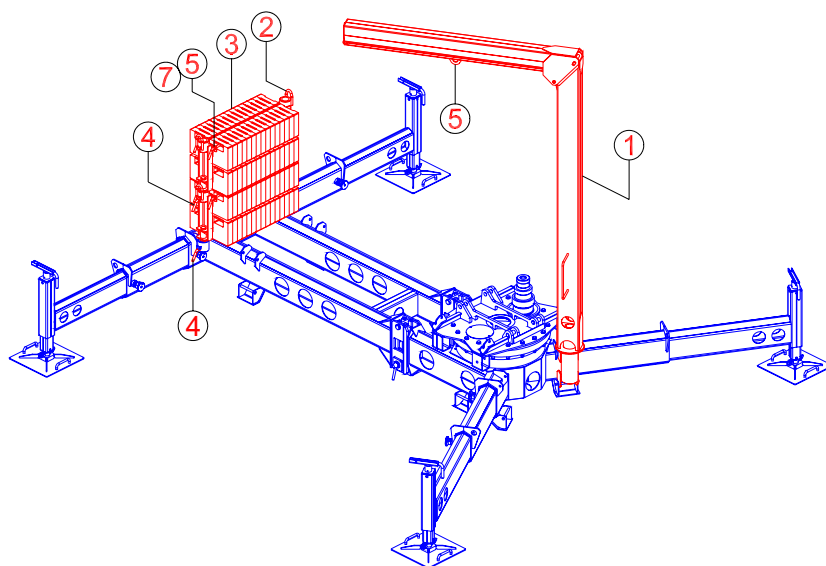


## ILLUSTRATED ASSEMBLY OF RK11-311 MKII BY 3D DRAWINGS

### Step 2

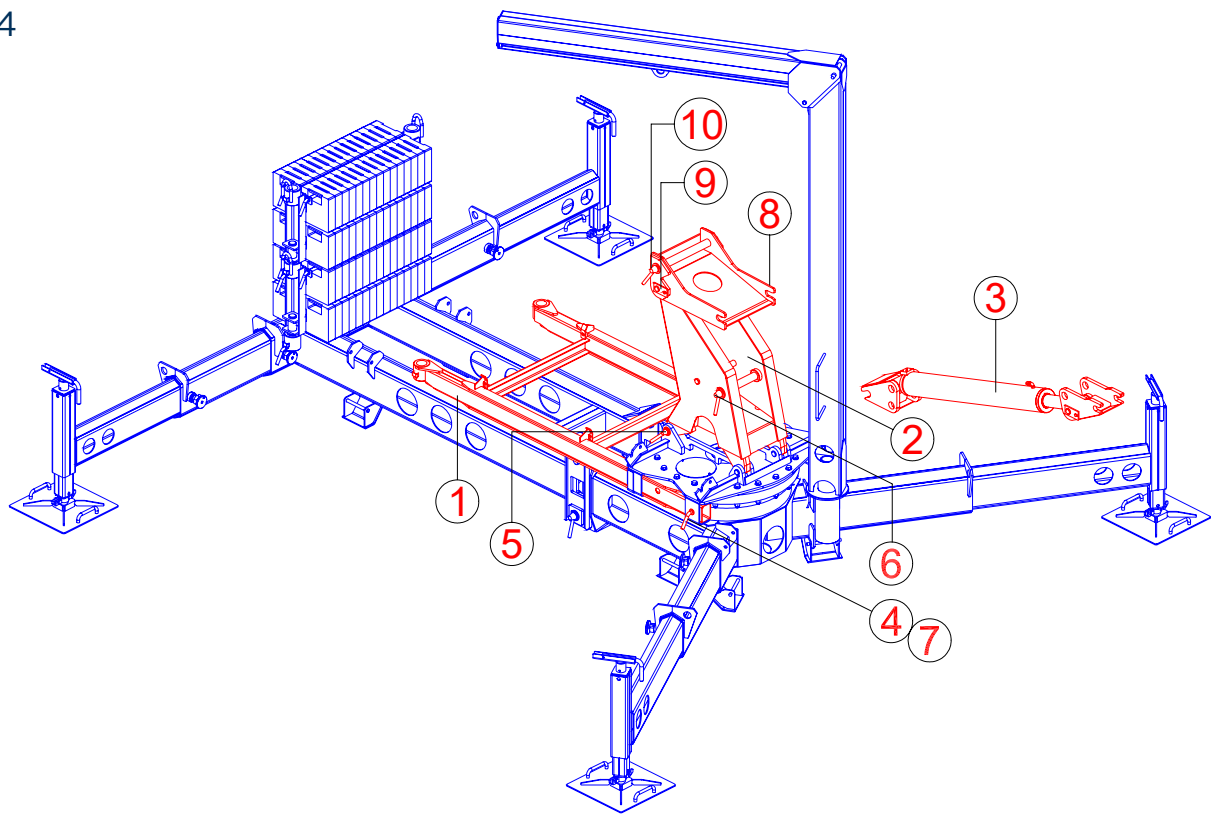


### Step 3

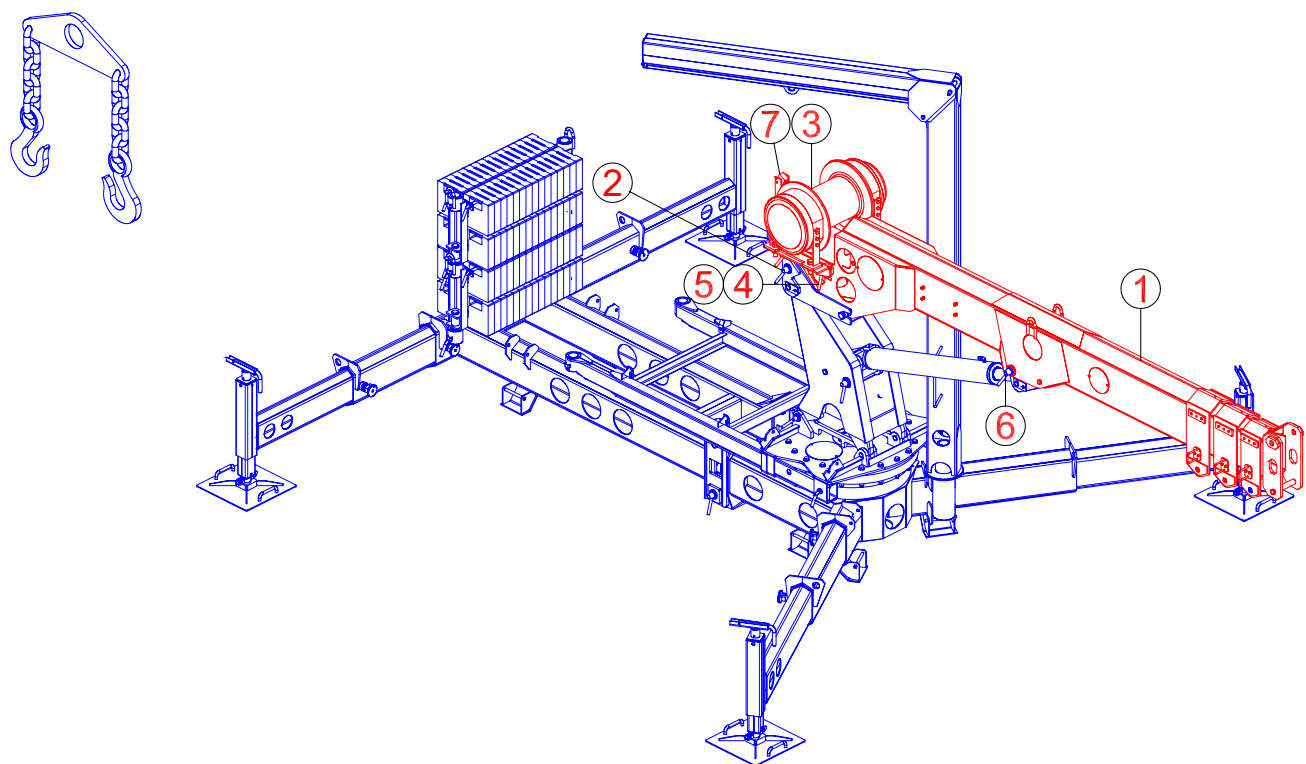


ILLUSTRATED ASSEMBLY OF RK11-311 MKII BY 3D DRAWINGS

Step 4

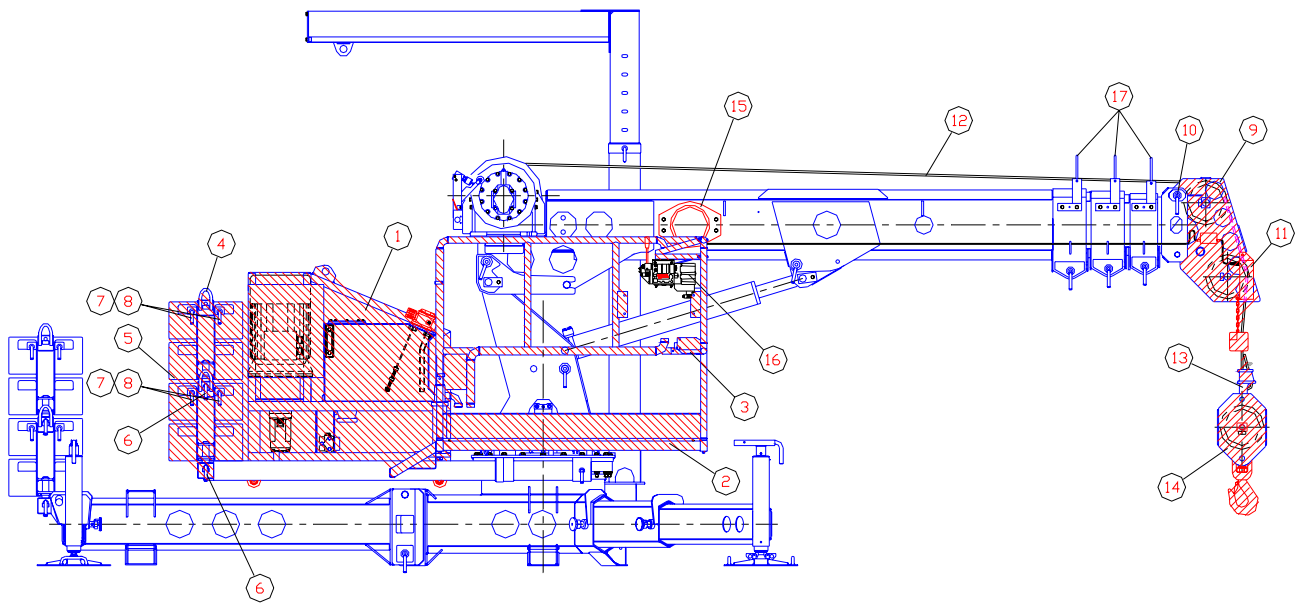


Step 5



## ILLUSTRATED ASSEMBLY OF RK11-311 MKII BY 3D DRAWINGS

### Step 6



## CONTACT

Ceptorn Cranes  
Godthåbsvej 18b 3. tv.  
DK-2000 Frederiksberg

Phone: +45 30 80 72 70  
[office@ceptorn.com](mailto:office@ceptorn.com)

[ceptorn.com](http://ceptorn.com)



# CEPTORN | CRANES